



# SYSTEM REQUIREMENT UPDATE

## HOW TO CHECK: TLS VERSION

1

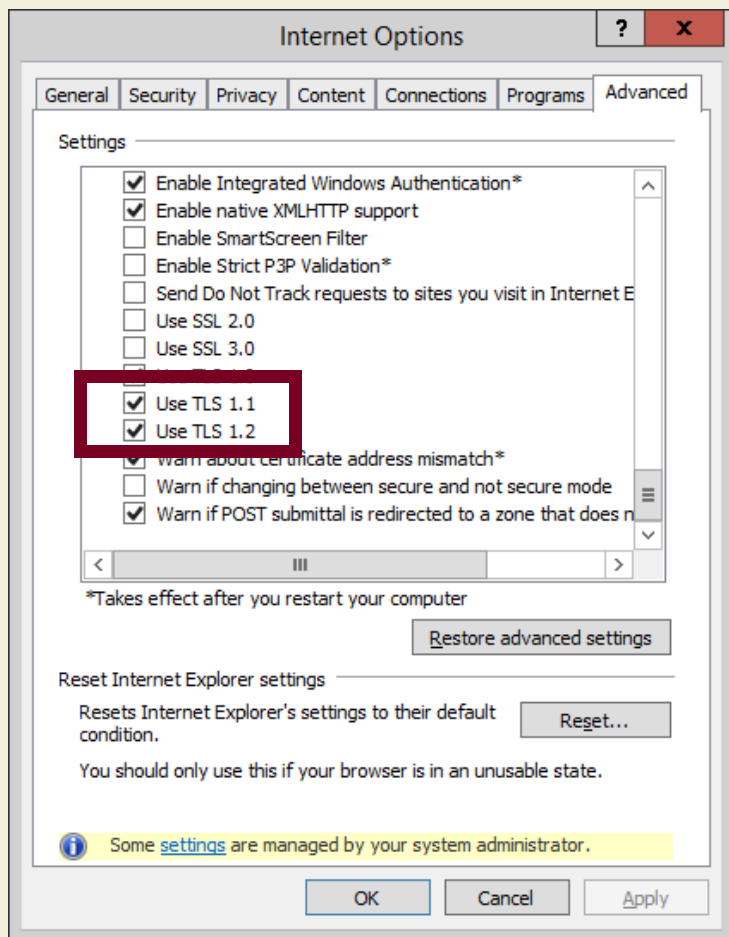
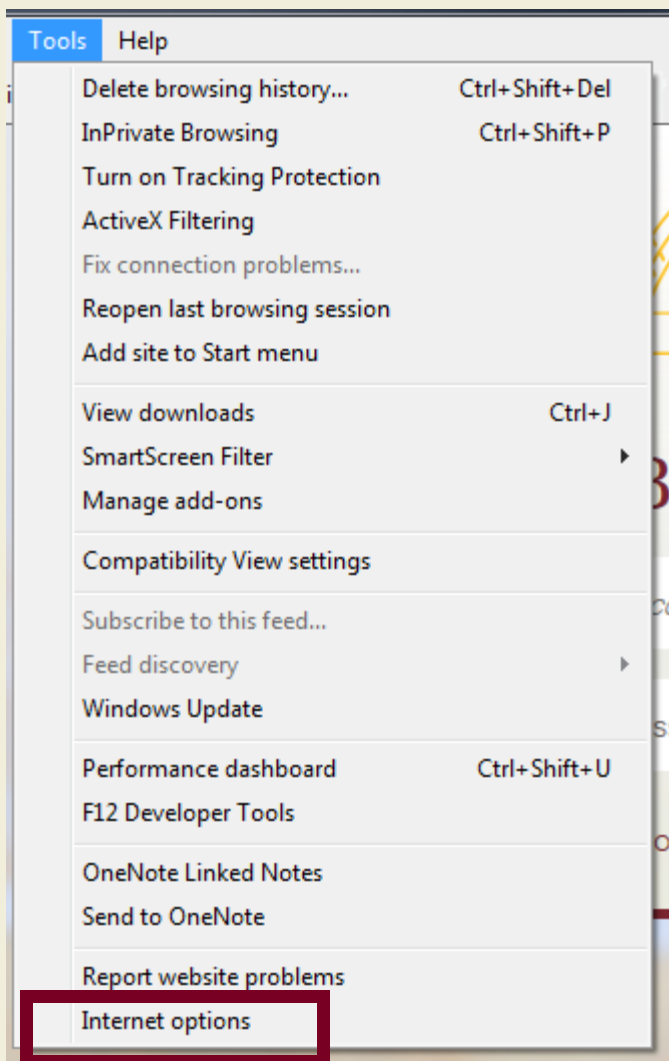
OPEN INTERNET EXPLORER

2

FROM THE MENU BAR, CLICK **TOOLS**  
> **INTERNET OPTIONS**  
> **ADVANCED** TAB

3

SCROLL DOWN TO **SECURITY**  
CATEGORY, MANUALLY CHECK  
THE OPTION BOX FOR **USE TLS**  
**1.1** AND **USE TLS 1.2**



4

CLICK OK

5

CLOSE YOUR  
BROWSER AND  
**RESTART** INTERNET  
EXPLORER